

\$475,000 - 532 Sturtz Link, Leduc

MLS® #E4455246

\$475,000

4 Bedroom, 3.50 Bathroom, 1,634 sqft

Single Family on 0.00 Acres

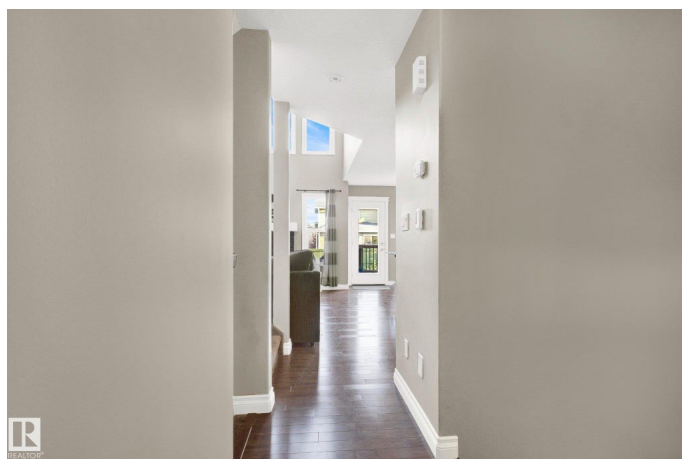
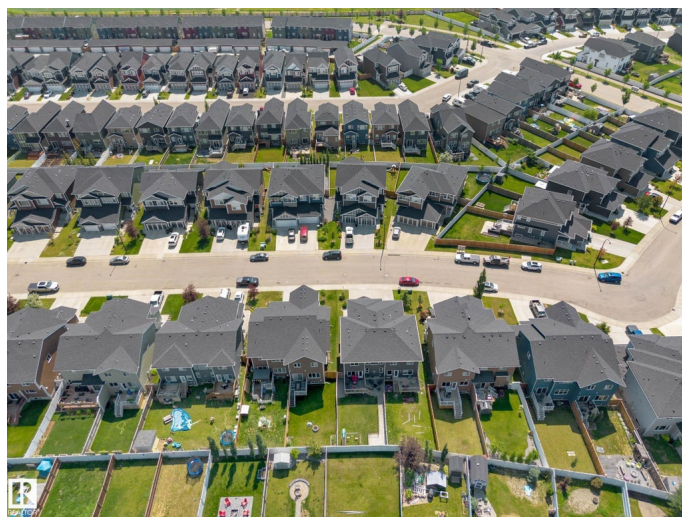
Southfork, Leduc, AB

Don't miss out on this stunning home featuring a double attached garage and finished across all three levels. With 4 bedrooms and 3.1 bathrooms, there's plenty of room for your family. Location is perfect with Father Leduc School steps away & all amenities close by. Spacious foyer welcomes you to great room w/amazing window wall, stone surround gas f/p & back garden door. Cozy kitchen is perfect for family cooking w/eat-on centre island, granite countertops, abundance of maple soft close cabinetry, corner pantry & upscale SS appliances. Iron spindled staircase takes you to open-to-below upper-level private owner's™ suite, complete with spa-like ensuite bath, WIC by California closet, and additional 2 bed. Fully finished basement by builder features rec room, bedroom, 4pc bath, and storage. Fully fenced, landscaped & all â€œdecked outâ€• to enjoy the outdoors...Recent upgrades, new hardwood, carpet on the stairs, laminate and landscaping.

Built in 2014

Essential Information

MLS® #	E4455246
Price	\$475,000
Bedrooms	4
Bathrooms	3.50



Full Baths	3
Half Baths	1
Square Footage	1,634
Acres	0.00
Year Built	2014
Type	Single Family
Sub-Type	Half Duplex
Style	2 Storey
Status	Active

Community Information

Address	532 Sturtz Link
Area	Leduc
Subdivision	Southfork
City	Leduc
County	ALBERTA
Province	AB
Postal Code	T9E 0Y7

Amenities

Amenities	Air Conditioner, Carbon Monoxide Detectors, Ceiling 9 ft., Closet Organizers, Deck, Detectors Smoke, Dog Run-Fenced In
Parking	Double Garage Attached

Interior

Interior Features	ensuite bathroom
Appliances	Air Conditioning-Central, Dishwasher-Built-In, Dryer, Garage Control, Garage Opener, Garburator, Hood Fan, Microwave Hood Fan, Stove-Gas, Washer, Window Coverings
Heating	Forced Air-1, Natural Gas
Stories	3
Has Basement	Yes
Basement	Full, Finished

Exterior

Exterior	Wood, Vinyl
Exterior Features	Airport Nearby, Landscaped, See Remarks
Roof	Asphalt Shingles
Construction	Wood, Vinyl

Foundation Concrete Perimeter

Additional Information

Date Listed August 28th, 2025

Days on Market 17

Zoning Zone 81

DATA IS DEEMED RELIABLE BUT IS NOT GUARANTEED ACCURATE BY THE REALTORS® ASSOCIATION OF EDMONTON. COPYRIGHT 2025 BY THE REALTORS® ASSOCIATION OF EDMONTON. ALL RIGHTS RESERVED.Trademarks are owned or controlled by the Canadian Real Estate Association (CREA) and identify real estate professionals who are members of CREA (REALTOR®, REALTORS®) and/or the quality of services they provide (MLS®, Multiple Listing Service®)

Listing information last updated on September 14th, 2025 at 11:32am MDT