

# \$279,900 - 28 Homestead Crescent, Edmonton

MLS® #E4450771

**\$279,900**

3 Bedroom, 1.50 Bathroom, 1,073 sqft  
Single Family on 0.00 Acres

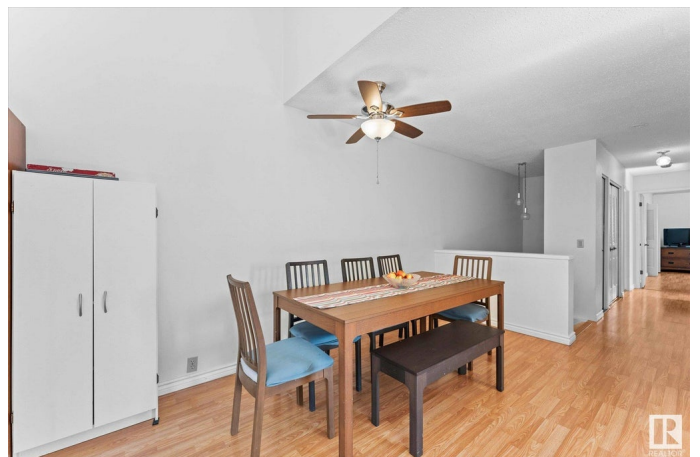
Homesteader, Edmonton, AB

What a great opportunity to own your own home for the price of a condo BUT NO CONDO FEES as this is a bi-level half duplex single family home is ready for new owners! The main level entrance has the garage entrance, 1/2 bath & Laundry, the third bedroom and a huge recreation/bonus room with large bi-level windows to feel like main level living. head up the stairs to the wide open main floor design with high ceilings, amazing living room & dining space and views of the pie shape back yard backing onto the walking/biking trails. This huge backyard has a large deck, garden boxes, shed & even a great sized play structure for the kids to enjoy. Heading back inside you have a u-shaped kitchen or design a new one with your own renovated design. As you head down the hall pass an updated bathroom with 2 more bedrooms including a huge Primary bedroom & walk-in closet. New Roof, updated furnace, vinyl windows & a single attached garage top this awesome home on a quiet keyhole crescent location.

Built in 1976

## Essential Information

MLS® #	E4450771
Price	\$279,900



Bedrooms	3
Bathrooms	1.50
Full Baths	1
Half Baths	1
Square Footage	1,073
Acres	0.00
Year Built	1976
Type	Single Family
Sub-Type	Half Duplex
Style	Bi-Level
Status	Active

### **Community Information**

Address	28 Homestead Crescent
Area	Edmonton
Subdivision	Homesteader
City	Edmonton
County	ALBERTA
Province	AB
Postal Code	T5A 2Y3

### **Amenities**

Amenities	Ceiling 9 ft., Deck, Vaulted Ceiling, See Remarks
Parking Spaces	3
Parking	Front Drive Access, Single Garage Attached

### **Interior**

Appliances	Dryer, Fan-Ceiling, Garage Control, Hood Fan, Refrigerator, Stove-Electric, Washer
Heating	Forced Air-1, Natural Gas
Stories	2
Has Basement	Yes
Basement	Full, Finished

### **Exterior**

Exterior	Wood, Stucco
Exterior Features	Corner Lot, Cul-De-Sac, Fenced, No Back Lane, No Through Road, Playground Nearby, Public Transportation, Schools, Treed Lot, See Remarks

Roof	Asphalt Shingles, Flat, See Remarks
Construction	Wood, Stucco
Foundation	Concrete Perimeter

### **School Information**

Elementary	Homesteader k-6
Middle	John D Bracco 7-9
High	Eastglen 10-12

### **Additional Information**

Date Listed	August 1st, 2025
Days on Market	1
Zoning	Zone 35

DATA IS DEEMED RELIABLE BUT IS NOT GUARANTEED ACCURATE BY THE REALTORS® ASSOCIATION OF EDMONTON. COPYRIGHT 2025 BY THE REALTORS® ASSOCIATION OF EDMONTON. ALL RIGHTS RESERVED. Trademarks are owned or controlled by the Canadian Real Estate Association (CREA) and identify real estate professionals who are members of CREA (REALTOR®, REALTORS®) and/or the quality of services they provide (MLS®, Multiple Listing Service®)

Listing information last updated on August 2nd, 2025 at 11:17am MDT