

\$619,900 - 1510 Westerra Bend, Stony Plain

MLS® #E4447920

\$619,900

4 Bedroom, 3.50 Bathroom, 2,501 sqft

Single Family on 0.00 Acres

Westerra, Stony Plain, AB

Ideally situated between High Park Kä9 School and Stony Plain Memorial High School, this impressive home offers nearly 4,000 sq ft of finished living space and is perfect for growing families! The oversized 26x21 double attached garage includes a new garage door, while a new furnace and new dishwasher add modern convenience. Inside, enjoy soaring 18-ft ceilings in the main living room, 3 family rooms, a den, formal dining, and a huge kitchen with a center island and ample white cabinetry. With 4 bedrooms (3 up, 1 down) and 4 baths, including a luxurious 5-pce ensuite in the large primary bedroom with French doors and walk-in closet, thereâ€™s room for everyone. The finished basement includes a newer 3-pce bath, dry bar, and space for a pool table. Enjoy sunny evenings in your west-facing backyard featuring a large deck, pergola, and a huge storage shed. Hardwood, ceramic tile, and cozy carpet throughout. Covered front porch adds charm. A true gem in a family-friendly neighborhood!

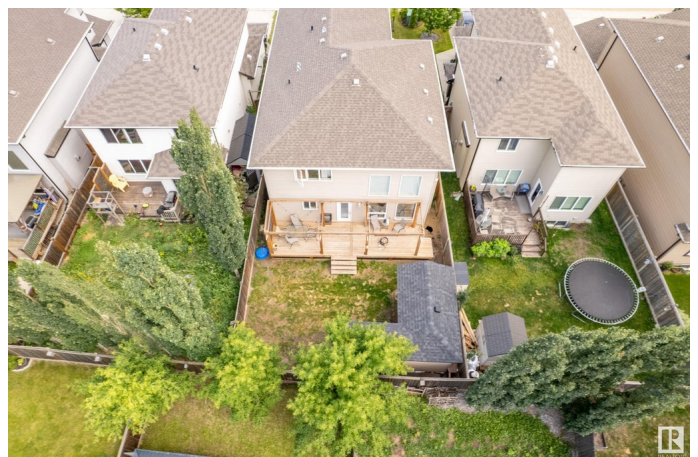
Built in 2014

Essential Information

MLS® # E4447920

Price \$619,900

Bedrooms 4



Bathrooms	3.50
Full Baths	3
Half Baths	1
Square Footage	2,501
Acres	0.00
Year Built	2014
Type	Single Family
Sub-Type	Detached Single Family
Style	2 Storey
Status	Active

Community Information

Address	1510 Westerra Bend
Area	Stony Plain
Subdivision	Westerra
City	Stony Plain
County	ALBERTA
Province	AB
Postal Code	T7Z 0B3

Amenities

Amenities	On Street Parking, Ceiling 9 ft., Deck, No Smoking Home, Vinyl Windows, Wall Unit-Built-In
Parking Spaces	5
Parking	Double Garage Attached, Over Sized

Interior

Interior Features	ensuite bathroom
Appliances	Dishwasher-Built-In, Dryer, Fan-Ceiling, Garage Control, Garage Opener, Microwave Hood Fan, Refrigerator, Storage Shed, Stove-Electric, Washer, Window Coverings
Heating	Forced Air-1, Natural Gas
Fireplace	Yes
Fireplaces	Mantel
Stories	3
Has Basement	Yes
Basement	Full, Finished

Exterior

Exterior	Wood, Vinyl
Exterior Features	Fenced, Landscaped, Low Maintenance Landscape, No Back Lane, Paved Lane, Picnic Area, Playground Nearby, Schools, Shopping Nearby
Roof	Asphalt Shingles
Construction	Wood, Vinyl
Foundation	Concrete Perimeter

School Information

Elementary	High Park
Middle	High Park
High	Stony Plain Memorial

Additional Information

Date Listed	July 15th, 2025
Days on Market	4
Zoning	Zone 91

DATA IS DEEMED RELIABLE BUT IS NOT GUARANTEED ACCURATE BY THE REALTORS® ASSOCIATION OF EDMONTON. COPYRIGHT 2025 BY THE REALTORS® ASSOCIATION OF EDMONTON. ALL RIGHTS RESERVED.Trademarks are owned or controlled by the Canadian Real Estate Association (CREA) and identify real estate professionals who are members of CREA (REALTOR®, REALTORS®) and/or the quality of services they provide (MLS®, Multiple Listing Service®)

Listing information last updated on July 19th, 2025 at 7:47am MDT