

\$529,900 - 26a Rosewood Drive, Sherwood Park

MLS® #E4447215

\$529,900

4 Bedroom, 2.00 Bathroom, 1,122 sqft

Single Family on 0.00 Acres

Maplewood (Sherwood Park), Sherwood Park, AB

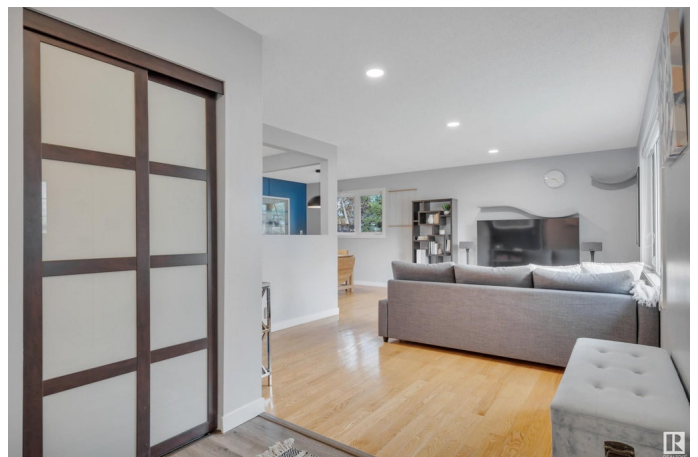
Bright, beautiful and extensively renovated in desirable Maplewood! This gorgeous bungalow boasts an open kitchen with white shaker cabinetry, expansive QUARTZ counters, glass subway backsplash and stainless appliances. The main bath has been fully renovated with tile surround and HEATED TILE FLOORS! The back entry leads to a fully separate kitchen, living room, 2nd laundry room, 3 pc bath and fully insulated bedroom with beautiful pine ceilings. Enjoy the spacious back deck with integrated lighting, large patio and ample size yard. Plus! There is a INSULATED AND HEATED DBL garage and additional parking pad. NUMEROUS UPGRADES over the years include: Windows, roof, eaves, A/C, HE furnace, HWT, kitchen, main bath, flooring (NO CARPET!), paint, trim, lighting, fixtures, attic insulation, deck, fence, electrical panel, and back-flow valve. This amazing location is close to schools, parks, amenities...you can even walk the tree lined street to Roasti coffee- only a few hundred meters away!

Built in 1972

Essential Information

MLS® # E4447215

Price \$529,900



Bedrooms	4
Bathrooms	2.00
Full Baths	2
Square Footage	1,122
Acres	0.00
Year Built	1972
Type	Single Family
Sub-Type	Detached Single Family
Style	Bungalow
Status	Active

Community Information

Address	26a Rosewood Drive
Area	Sherwood Park
Subdivision	Maplewood (Sherwood Park)
City	Sherwood Park
County	ALBERTA
Province	AB
Postal Code	T8A 2H3

Amenities

Amenities	Air Conditioner, Deck, No Smoking Home, Parking-Extra, Vinyl Windows
Parking Spaces	4
Parking	Double Garage Detached

Interior

Appliances	Air Conditioning-Central, Garage Control, Garage Opener, Hood Fan, Vacuum System Attachments, Vacuum Systems, Window Coverings, Dryer-Two, Refrigerators-Two, Stoves-Two, Washers-Two, Dishwasher-Two
Heating	Forced Air-1, Natural Gas
Stories	2
Has Suite	Yes
Has Basement	Yes
Basement	Full, Finished

Exterior

Exterior	Wood, Stucco
Exterior Features	Fenced, Landscaped, Park/Reserve, Picnic Area, Playground Nearby,

Public Transportation, Schools, Shopping Nearby

Roof	Asphalt Shingles
Construction	Wood, Stucco
Foundation	Concrete Perimeter

School Information

Elementary	Brentwood Elementary
Middle	Sherwood Heights Jr High
High	Salisbury Composite

Additional Information

Date Listed	July 11th, 2025
Days on Market	2
Zoning	Zone 25

DATA IS DEEMED RELIABLE BUT IS NOT GUARANTEED ACCURATE BY THE REALTORS® ASSOCIATION OF EDMONTON. COPYRIGHT 2025 BY THE REALTORS® ASSOCIATION OF EDMONTON. ALL RIGHTS RESERVED.Trademarks are owned or controlled by the Canadian Real Estate Association (CREA) and identify real estate professionals who are members of CREA (REALTOR®, REALTORS®) and/or the quality of services they provide (MLS®, Multiple Listing Service®)

Listing information last updated on July 12th, 2025 at 11:17pm MDT