

\$549,000 - 8619 80 Street, Edmonton

MLS® #E4446591

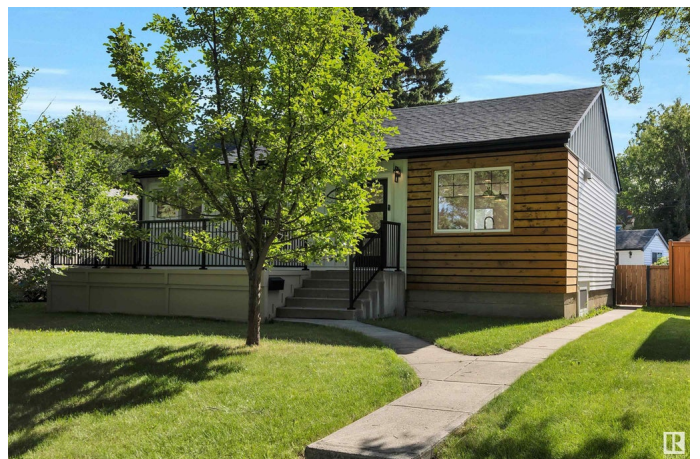
\$549,000

4 Bedroom, 2.00 Bathroom, 906 sqft

Single Family on 0.00 Acres

Idylwylde, Edmonton, AB

Located on a quiet tree lined street in Idylwylde, just blocks away from the LRT, shopping, public swimming and schools, this fully renovated four bedroom bungalow awaits. With creamy floors, soft colours, open concept design, tons of natural light and beautiful finishes, you will fall in love with this peaceful and beautiful space. This home is now complete and features the following upgrades... new flooring, drywall, electrical, plumbing, bathrooms, basement windows, some main floor windows, kitchen, all new doors, furnace, fence, front porch, back concrete patio, drive pad, siding and roof. The basement features tons of storage in the brand new laundry room and mechanical room, two amazing size bedrooms and a comfy family room for movie nights. Unlike most small bungalows, this one has a utility, linen and coat closet on the main floor as well a great size pantry off the brand new elegant kitchen. Stretch out and enjoy the 547m² lot, fully fenced, very spacious and two beautiful apple trees.



Built in 1952

Essential Information

MLS® # E4446591

Price \$549,000

Bedrooms	4
Bathrooms	2.00
Full Baths	2
Square Footage	906
Acres	0.00
Year Built	1952
Type	Single Family
Sub-Type	Detached Single Family
Style	Bungalow
Status	Active

Community Information

Address	8619 80 Street
Area	Edmonton
Subdivision	Idylwylde
City	Edmonton
County	ALBERTA
Province	AB
Postal Code	T6C 2S8

Amenities

Amenities	On Street Parking, Carbon Monoxide Detectors, Deck, Detectors Smoke, Front Porch, Hot Water Natural Gas, No Smoking Home, Parking-Extra, Smart/Program. Thermostat, Vinyl Windows
Parking	Single Garage Detached

Interior

Appliances	Dishwasher-Built-In, Dryer, Refrigerator, Stove-Electric, Washer
Heating	Forced Air-1, Natural Gas
Stories	2
Has Basement	Yes
Basement	Full, Finished

Exterior

Exterior	Wood, Metal, Vinyl
Exterior Features	Back Lane, Fenced, Fruit Trees/Shrubs, Low Maintenance Landscape, Public Transportation, Schools, Shopping Nearby
Roof	Asphalt Shingles
Construction	Wood, Metal, Vinyl

Foundation Concrete Perimeter

Additional Information

Date Listed July 8th, 2025

Days on Market 51

Zoning Zone 18

DATA IS DEEMED RELIABLE BUT IS NOT GUARANTEED ACCURATE BY THE REALTORS® ASSOCIATION OF EDMONTON. COPYRIGHT 2025 BY THE REALTORS® ASSOCIATION OF EDMONTON. ALL RIGHTS RESERVED.Trademarks are owned or controlled by the Canadian Real Estate Association (CREA) and identify real estate professionals who are members of CREA (REALTOR®, REALTORS®) and/or the quality of services they provide (MLS®, Multiple Listing Service®)

Listing information last updated on August 28th, 2025 at 6:02pm MDT