

## \$189,700 - 18 1503 Millwoods Rd, Edmonton

MLS® #E4444504

**\$189,700**

2 Bedroom, 1.00 Bathroom, 947 sqft

Condo / Townhouse on 0.00 Acres

Crawford Plains, Edmonton, AB

Location, Location, Location! Welcome to this breathtaking 2 bedroom end unit located in the highly sought after neighbourhood of Crawford Plains. From the second you walk into this 100% CUSTOM RENOVATED CONDO you will see the elegance and custom finishings throughout. NEW FLOORING, BASEBOARDS, CUSTOM EXOTIC TILE surround fireplace, CUSTOM white gloss soft close kitchen cabinets and draws, BRAND NEW stainless steel appliances, WHITE QUARTZ countertops and BLACK QUARTZ backsplash, mirrors, closet doors, custom lighting, zebra blinds, faucets, doors & hardware throughout. The bathroom has a touch LED mirror, the tub/shower has custom tile surround plus you have ensuite laundry. You also have an extra storage room right outside your front door. This is a must see and it has it all just move in and enjoy pure elegance!

Built in 1980

### Essential Information

MLS® #	E4444504
Price	\$189,700
Bedrooms	2
Bathrooms	1.00
Full Baths	1



Square Footage	947
Acres	0.00
Year Built	1980
Type	Condo / Townhouse
Sub-Type	Carriage
Style	Bungalow
Status	Active

### Community Information

Address	18 1503 Millwoods Rd
Area	Edmonton
Subdivision	Crawford Plains
City	Edmonton
County	ALBERTA
Province	AB
Postal Code	T6L 4C2

### Amenities

Amenities	Deck, Parking-Visitor, Storage-In-Suite
Parking Spaces	1
Parking	Stall

### Interior

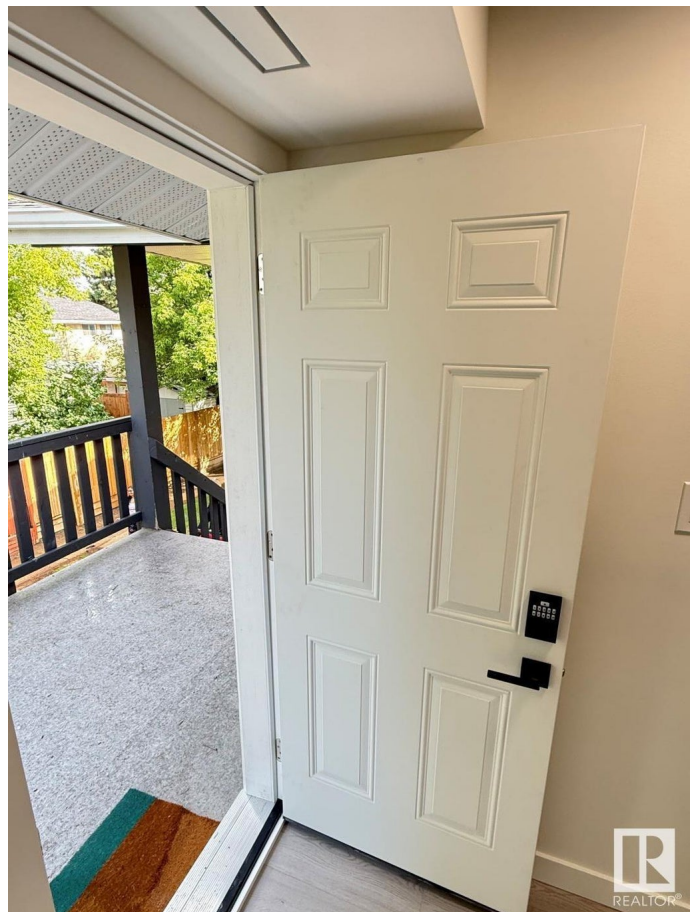
Appliances	Dishwasher-Built-In, Dryer, Microwave Hood Fan, Refrigerator, Stove-Electric, Washer
Heating	Forced Air-1, Natural Gas
Fireplace	Yes
Fireplaces	Tile Surround
Stories	1
Has Basement	Yes
Basement	None, No Basement

### Exterior

Exterior	Wood, Vinyl
Exterior Features	Landscaped, Public Transportation, Schools, Shopping Nearby
Roof	Asphalt Shingles
Construction	Wood, Vinyl
Foundation	Concrete Perimeter

### Additional Information

Date Listed	June 26th, 2025
Days on Market	24
Zoning	Zone 29
Condo Fee	\$255



DATA IS DEEMED RELIABLE BUT IS NOT GUARANTEED ACCURATE BY THE REALTORS® ASSOCIATION OF EDMONTON. COPYRIGHT 2025 BY THE REALTORS® ASSOCIATION OF EDMONTON. ALL RIGHTS RESERVED. Trademarks are owned or controlled by the Canadian Real Estate Association (CREA) and identify real estate professionals who are members of CREA (REALTOR®, REALTORS®) and/or the quality of services they provide (MLS®, Multiple Listing Service®)

Listing information last updated on July 20th, 2025 at 10:47am MDT