

\$420,000 - 4 Milburn Crescent, St. Albert

MLS® #E4442972

\$420,000

4 Bedroom, 1.50 Bathroom, 1,956 sqft

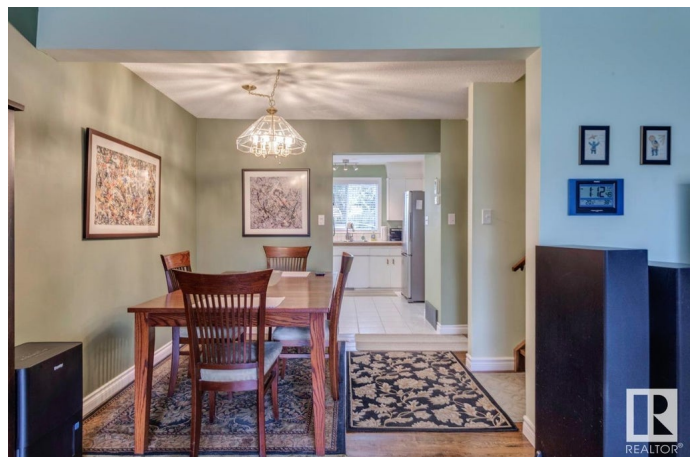
Single Family on 0.00 Acres

Mission (St. Albert), St. Albert, AB

GREAT LOCATION ,CLOSE TO PARKS, WALK TO FARMERS MARKET, CLOSE TO SCHOOLS, STORES, EASY ACCESS OUT OF TOWN, OLDER MISSION AREA,LARGE BASEMENT WINDOWS, WOOD BURNING MASONARY FIREPLACE, LARGE DECK, NEWER MAIN ROOF REPLACED WITH 4/12 PITCH, STUCCO REMOVED AND STYROFOAM APPLIED TO THE EXISTING SHEETING. COVERING THE WHOLE WALL INCLUDING FRAMING, ABOUT A R22 RATING, BETTER THAN A ENERGY EFFICIENT HOUSE. BONUS ROOM OVER GARAGE ABOUT 496 SQ FEET - UNFINISHED,NEED TRIM FLOORING, HEAT, INSTALL, HOLES PREDRILLED IN FLOOR JOISTS , MOST OF THE DOORS AND WINDOWS REPLACED. HAVE IN-FLOORING HEAT SYSTEM, EXCEPT TANK. BONUS ROOM OVER GARAGE UNFINISHED 496 SQ. FEET,ELECTRICAL INSPECTION RECENTLY DONE, BASEMENT IS ALL COPPER WIRING, MAIN FLOOR HAS 7 COPPER WIRING WITH PLUGS, ALL ALUMINIUM PLUGS AND SWITCHES REPLACED WITH ALUMINIUM CORRECT PLUGS AND SWITCHES, BATHROOMS UPDATED.

Built in 1973

Essential Information



| | |
|----------------|-------------------|
| MLS® # | E4442972 |
| Price | \$420,000 |
| Bedrooms | 4 |
| Bathrooms | 1.50 |
| Full Baths | 1 |
| Half Baths | 1 |
| Square Footage | 1,956 |
| Acres | 0.00 |
| Year Built | 1973 |
| Type | Single Family |
| Sub-Type | Half Duplex |
| Style | 2 and Half Storey |
| Status | Active |

Community Information

| | |
|-------------|----------------------|
| Address | 4 Milburn Crescent |
| Area | St. Albert |
| Subdivision | Mission (St. Albert) |
| City | St. Albert |
| County | ALBERTA |
| Province | AB |
| Postal Code | T8N 1X8 |

Amenities

| | |
|----------------|--|
| Amenities | See Remarks |
| Parking Spaces | 5 |
| Parking | Double Garage Attached, Parking Pad Cement/Paved, RV Parking |

Interior

| | |
|--------------|---|
| Appliances | Dishwasher-Built-In, Dryer, Freezer, Garage Control, Refrigerator, Stove-Electric, Washer, Window Coverings |
| Heating | Forced Air-1, Natural Gas |
| Fireplace | Yes |
| Fireplaces | Brick Facing, Mantel |
| Stories | 3 |
| Has Basement | Yes |
| Basement | Full, Partially Finished |

Exterior

| | |
|-------------------|---|
| Exterior | Wood, Vinyl |
| Exterior Features | Park/Reserve, Playground Nearby, Schools, Shopping Nearby |
| Roof | Asphalt Shingles |
| Construction | Wood, Vinyl |
| Foundation | Concrete Perimeter |

Additional Information

| | |
|----------------|-----------------|
| Date Listed | June 18th, 2025 |
| Days on Market | 18 |
| Zoning | Zone 24 |

DATA IS DEEMED RELIABLE BUT IS NOT GUARANTEED ACCURATE BY THE REALTORS® ASSOCIATION OF EDMONTON. COPYRIGHT 2025 BY THE REALTORS® ASSOCIATION OF EDMONTON. ALL RIGHTS RESERVED.Trademarks are owned or controlled by the Canadian Real Estate Association (CREA) and identify real estate professionals who are members of CREA (REALTOR®, REALTORS®) and/or the quality of services they provide (MLS®, Multiple Listing Service®)

Listing information last updated on July 6th, 2025 at 1:47am MDT