

## \$147,900 - 302 9916 113 Street, Edmonton

MLS® #E4441467

**\$147,900**

2 Bedroom, 2.00 Bathroom, 813 sqft

Condo / Townhouse on 0.00 Acres

W&#229;hkw&#229;nt&#229;win, Edmonton, AB

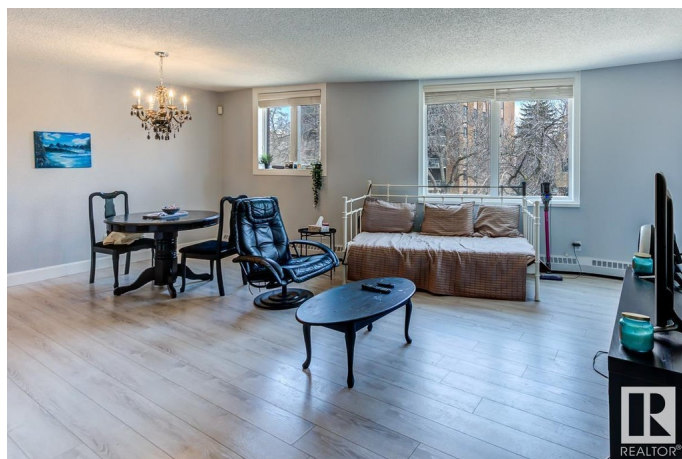
Perfect for students or first-time buyers, this spacious 2-bed, 2-bath condo offers unbeatable downtown convenienceâ€”just steps from the LRT, Victoria Park, the river valley, U of A, MacEwan, shopping, dining, nightlife, and more! Thoughtfully designed, the generously sized bedrooms are on opposite sides of the bright, open-concept living space for maximum privacy and functionality. The stylish kitchen features sleek black high-gloss cabinetry, a retro back-splash, and plenty of storage. The versatile living and dining area allows for flexible layouts to suit your needs. The primary bedroom boasts mirrored closet doors and a 4pc ensuite, while a second bedroom and another full bath complete the unit. Recent updates include trendy laminate flooring, fresh neutral paint, and modern baseboards. Enjoy heated underground parking, shared laundry, an on-site car wash and a well-managed building with excellent amenitiesâ€”perfect for hassle-free urban living! Condo fee includes all utilities except for electricity!

Built in 1981

### Essential Information

MLS® # E4441467

Price \$147,900



Bedrooms	2
Bathrooms	2.00
Full Baths	2
Square Footage	813
Acres	0.00
Year Built	1981
Type	Condo / Townhouse
Sub-Type	Apartment High Rise
Style	Single Level Apartment
Status	Active

### Community Information

Address	302 9916 113 Street
Area	Edmonton
Subdivision	WÃ©hkwÃªntÃ´win
City	Edmonton
County	ALBERTA
Province	AB
Postal Code	T5K 2N3

### Amenities

Amenities	Deck, Intercom, Parking-Visitor, Secured Parking, Security Door, Storage-In-Suite, Television Connection
Parking Spaces	1
Parking	Underground

### Interior

Interior Features	ensuite bathroom
Appliances	Dishwasher-Built-In, Hood Fan, Refrigerator, Stove-Electric
Heating	Baseboard, Natural Gas
# of Stories	15
Stories	1
Has Basement	Yes
Basement	None, No Basement

### Exterior

Exterior	Concrete, Brick
Exterior Features	Golf Nearby, Playground Nearby, Public Swimming Pool, Public Transportation, River Valley View, Schools, Shopping Nearby, View City

Roof	Tar & Gravel
Construction	Concrete, Brick
Foundation	Slab

### **Additional Information**

Date Listed	June 10th, 2025
Days on Market	35
Zoning	Zone 12
Condo Fee	\$836

DATA IS DEEMED RELIABLE BUT IS NOT GUARANTEED ACCURATE BY THE REALTORS® ASSOCIATION OF EDMONTON. COPYRIGHT 2025 BY THE REALTORS® ASSOCIATION OF EDMONTON. ALL RIGHTS RESERVED. Trademarks are owned or controlled by the Canadian Real Estate Association (CREA) and identify real estate professionals who are members of CREA (REALTOR®, REALTORS®) and/or the quality of services they provide (MLS®, Multiple Listing Service®)

Listing information last updated on July 14th, 2025 at 10:02pm MDT