

Courtesy Of Simmy Sohi Of Exp Realty

\$145,000 - 225 4304 139 Avenue, Edmonton

MLS® #E4438581

\$145,000

2 Bedroom, 2.00 Bathroom, 1,062 sqft

Condo / Townhouse on 0.00 Acres

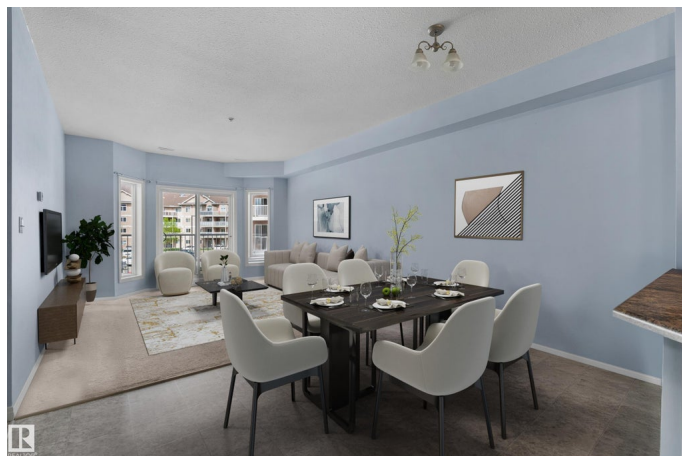
Clareview Town Centre, Edmonton, AB

Spacious and bright 2-bedroom, 2-bathroom condo located on the second floor of a well-maintained building. This open-concept unit offers over 1,000 sq. ft. of living space with large windows that flood the home with natural light. The modern layout includes in-suite laundry for added convenience. Enjoy underground heated parking and access to a fantastic amenities building featuring a gym, social room, and pool table. Perfectly situated right next to the LRT station, playground, and recreation centre, with a wide variety of restaurants just steps away. Ideal for professionals, small families, or investors seeking comfort and connectivity in one of the most desirable locations.

Built in 2006

Essential Information

MLS® #	E4438581
Price	\$145,000
Bedrooms	2
Bathrooms	2.00
Full Baths	2
Square Footage	1,062
Acres	0.00
Year Built	2006
Type	Condo / Townhouse



Sub-Type	Lowrise Apartment
Style	Single Level Apartment
Status	Active

Community Information

Address	225 4304 139 Avenue
Area	Edmonton
Subdivision	Clareview Town Centre
City	Edmonton
County	ALBERTA
Province	AB
Postal Code	T5Y 0H6

Amenities

Amenities	Exercise Room, No Smoking Home, Parking-Visitor, Party Room, Security Door, Social Rooms, Storage-In-Suite, Natural Gas BBQ Hookup
Parking	Heated, Parkade, Underground

Interior

Interior Features	ensuite bathroom
Appliances	Dishwasher-Built-In, Microwave Hood Fan, Refrigerator, Stacked Washer/Dryer, Stove-Electric
Heating	Forced Air-1, Natural Gas
# of Stories	4
Stories	1
Has Basement	Yes
Basement	None, No Basement

Exterior

Exterior	Wood, Stucco
Exterior Features	Public Transportation, Schools, Shopping Nearby
Roof	Asphalt Shingles
Construction	Wood, Stucco
Foundation	Concrete Perimeter

Additional Information

Date Listed	May 26th, 2025
Days on Market	91
Zoning	Zone 35

Condo Fee \$713

DATA IS DEEMED RELIABLE BUT IS NOT GUARANTEED ACCURATE BY THE REALTORS® ASSOCIATION OF EDMONTON. COPYRIGHT 2025 BY THE REALTORS® ASSOCIATION OF EDMONTON. ALL RIGHTS RESERVED.Trademarks are owned or controlled by the Canadian Real Estate Association (CREA) and identify real estate professionals who are members of CREA (REALTOR®, REALTORS®) and/or the quality of services they provide (MLS®, Multiple Listing Service®)

Listing information last updated on August 25th, 2025 at 12:47am MDT