

\$159,900 - 5 3855 76 Street, Edmonton

MLS® #E4435615

\$159,900

2 Bedroom, 1.00 Bathroom, 893 sqft

Condo / Townhouse on 0.00 Acres

Michaels Park, Edmonton, AB

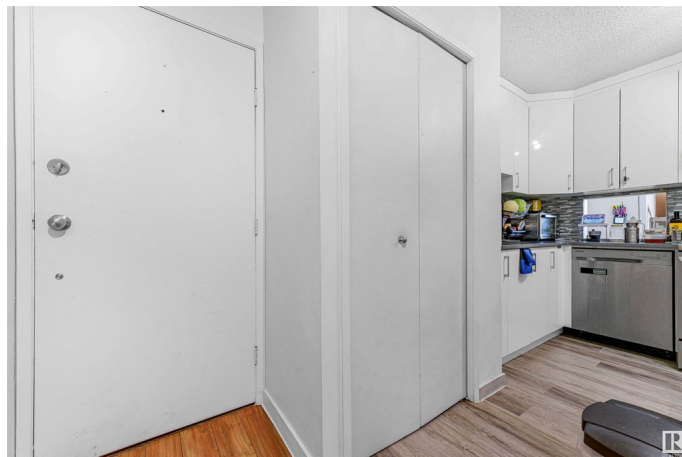
Discover your dream condo! This beautiful renovated 2-bed, 1-bath unit offers modern style & convenience in a welcoming community. The open-concept layout is perfect for relaxation & entertaining, w/large windows filling the space with natural light. Enjoy cooking in the contemporary updated kitchen with stainless steel appliances, ample cabinet space & quartz countertops. All appliances are still under extended WARRANTY from 1-3 years. Spacious & bright bedrooms provide brightness & comfortable retreat. The renovated bathroom features modern fixtures & a spa-like atmosphere w/lifetime warranty. Walking distance to excellent schools, playgrounds, FreshCo, Shoppers Drug Mart makes daily life a breeze. The condo community is well-maintained by a dedicated & responsive condo board that works hard ensuring a high quality of life for all residents. With secure entry, easy access to public transportation, parks & dining options, this condo offers the perfect blend of comfort & convenience. Must see!

Built in 1976

Essential Information

MLS® # E4435615

Price \$159,900



Bedrooms	2
Bathrooms	1.00
Full Baths	1
Square Footage	893
Acres	0.00
Year Built	1976
Type	Condo / Townhouse
Sub-Type	Lowrise Apartment
Style	Single Level Apartment
Status	Active

Community Information

Address	5 3855 76 Street
Area	Edmonton
Subdivision	Michaels Park
City	Edmonton
County	ALBERTA
Province	AB
Postal Code	T6K 2P9

Amenities

Amenities	No Animal Home, No Smoking Home, Parking-Extra, Parking-Visitor
Parking Spaces	1
Parking	Stall

Interior

Appliances	Dishwasher-Built-In, Dryer, Hood Fan, Oven-Microwave, Refrigerator, Stove-Electric, Washer
Heating	Baseboard, Hot Water, Natural Gas
# of Stories	3
Stories	1
Has Basement	Yes
Basement	None, No Basement

Exterior

Exterior	Wood, Stucco, Vinyl
Exterior Features	Landscaped, Playground Nearby, Public Transportation, Schools, Shopping Nearby
Roof	Asphalt Shingles

Construction	Wood, Stucco, Vinyl
Foundation	Concrete Perimeter

School Information

Elementary	Lee Ridge School
Middle	Edith Rogers School
High	W.P. Wagner School

Additional Information

Date Listed	May 9th, 2025
Days on Market	4
Zoning	Zone 29
Condo Fee	\$452

DATA IS DEEMED RELIABLE BUT IS NOT GUARANTEED ACCURATE BY THE REALTORS® ASSOCIATION OF EDMONTON. COPYRIGHT 2025 BY THE REALTORS® ASSOCIATION OF EDMONTON. ALL RIGHTS RESERVED.Trademarks are owned or controlled by the Canadian Real Estate Association (CREA) and identify real estate professionals who are members of CREA (REALTOR®, REALTORS®) and/or the quality of services they provide (MLS®, Multiple Listing Service®)

Listing information last updated on May 13th, 2025 at 11:17pm MDT