

## \$499,900 - 144 Foxhaven Place, Sherwood Park

MLS® #E4434894

**\$499,900**

4 Bedroom, 3.00 Bathroom, 1,124 sqft

Single Family on 0.00 Acres

Foxhaven, Sherwood Park, AB

Immaculate family home with an incredible backyard, tucked onto a quiet street in Foxhaven, featuring AC, 4 bedrooms, 3 baths & HEATED garage. A spacious entry invites you in to find vaulted ceilings & open layout. The kitchen offers plenty of cabinets, corner pantry, S/S appliances & quartz island that looks over the dining area. Cozy living room is filled with natural light from the picture window. King sized primary suite offers an UPDATED ensuite with huge shower & WI closet with BI organizers. 2nd bedroom is generous in size & 4pc main complete the functional layout. Fully finished basement offers a family sized rec room with fireplace, 2 more bedrooms, 4pc bath & tons of storage. UPDATES include baseboards, trim, paint, carpet, blinds, light fixtures, closet organizers, AC, fence (2 sides) & ROOF. You will LOVE entertaining in the sunny yard with NEW deck, pergola & gas line for the BBQ. All steps away from parks, trails, schools & Strathcona Athletic Park. Nothing to do but move in & ENJOY summer!

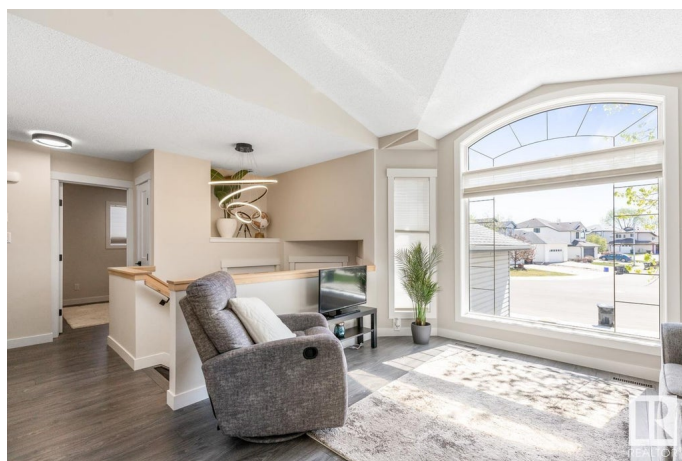
Built in 1999

### Essential Information

MLS® # E4434894

Price \$499,900

Bedrooms 4



Bathrooms	3.00
Full Baths	3
Square Footage	1,124
Acres	0.00
Year Built	1999
Type	Single Family
Sub-Type	Detached Single Family
Style	Bi-Level
Status	Active

### Community Information

Address	144 Foxhaven Place
Area	Sherwood Park
Subdivision	Foxhaven
City	Sherwood Park
County	ALBERTA
Province	AB
Postal Code	T8A 5Y3

### Amenities

Amenities	Air Conditioner, Closet Organizers, Deck, Vaulted Ceiling, See Remarks
Parking	Double Garage Attached, Heated

### Interior

Interior Features	ensuite bathroom
Appliances	Air Conditioning-Central, Dishwasher-Built-In, Dryer, Microwave Hood Fan, Refrigerator, Storage Shed, Stove-Electric, Washer, Window Coverings, Garage Heater
Heating	Forced Air-1, Natural Gas
Fireplace	Yes
Fireplaces	Corner
Stories	2
Has Basement	Yes
Basement	Full, Finished

### Exterior

Exterior	Wood, Vinyl
Exterior Features	Fenced, Landscaped, Playground Nearby, Public Transportation, Schools, Shopping Nearby, See Remarks

Roof	Asphalt Shingles
Construction	Wood, Vinyl
Foundation	Concrete Perimeter

### **School Information**

Elementary	GLEN ALLAN
Middle	F R HAYTHORNE
High	BEV FACEY COMP

### **Additional Information**

Date Listed	May 7th, 2025
Days on Market	3
Zoning	Zone 25

DATA IS DEEMED RELIABLE BUT IS NOT GUARANTEED ACCURATE BY THE REALTORS® ASSOCIATION OF EDMONTON. COPYRIGHT 2025 BY THE REALTORS® ASSOCIATION OF EDMONTON. ALL RIGHTS RESERVED. Trademarks are owned or controlled by the Canadian Real Estate Association (CREA) and identify real estate professionals who are members of CREA (REALTOR®, REALTORS®) and/or the quality of services they provide (MLS®, Multiple Listing Service®)

Listing information last updated on May 10th, 2025 at 2:32pm MDT