

Courtesy Of Heather McLellan Of Exp Realty

\$419,900 - 95 South Creek Wynd, Stony Plain

MLS® #E4434824

\$419,900

3 Bedroom, 2.50 Bathroom, 1,277 sqft

Single Family on 0.00 Acres

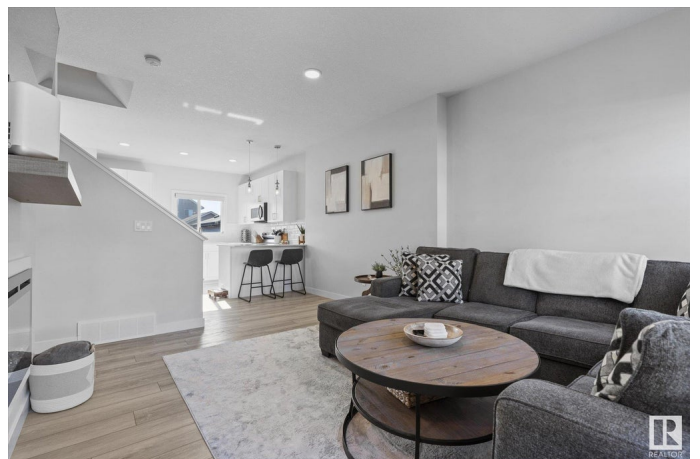
South Creek, Stony Plain, AB

Discover this beautifully maintained 2-storey home located in South Creek! With 3 bedrooms, 2.5 bathrooms and an open-concept design, this house is ready for you to move right in. The interior is clean and bright, ideal for family living. Step outside to a cute, landscaped yard featuring a cozy fire pit, perfect for gatherings or quiet evenings under the stars. The property also includes a convenient two-car garage. Enjoy the benefits of nearby amenities, including a serene pond with walking trails and access to a golf course, making this home a perfect blend of comfort and outdoor living!

Built in 2021

Essential Information

MLS® #	E4434824
Price	\$419,900
Bedrooms	3
Bathrooms	2.50
Full Baths	2
Half Baths	1
Square Footage	1,277
Acres	0.00
Year Built	2021
Type	Single Family
Sub-Type	Detached Single Family



Style 2 Storey
Status Active

Community Information

Address 95 South Creek Wynd
Area Stony Plain
Subdivision South Creek
City Stony Plain
County ALBERTA
Province AB
Postal Code T7Z 0J9

Amenities

Amenities Deck, Fire Pit
Parking Double Garage Detached

Interior

Interior Features ensuite bathroom
Appliances Dishwasher-Built-In, Dryer, Garage Control, Garage Opener, Microwave Hood Fan, Refrigerator, Stove-Electric, Washer, Window Coverings, TV Wall Mount
Heating Forced Air-1, Natural Gas
Fireplace Yes
Fireplaces Insert
Stories 2
Has Basement Yes
Basement Full, Unfinished

Exterior

Exterior Wood, Stone, Vinyl
Exterior Features Back Lane, Fenced, Golf Nearby, Landscaped, Playground Nearby, Schools, Shopping Nearby
Roof Asphalt Shingles
Construction Wood, Stone, Vinyl
Foundation Concrete Perimeter

Additional Information

Date Listed May 6th, 2025
Days on Market 6
Zoning Zone 91

DATA IS DEEMED RELIABLE BUT IS NOT GUARANTEED ACCURATE BY THE REALTORS® ASSOCIATION OF EDMONTON. COPYRIGHT 2025 BY THE REALTORS® ASSOCIATION OF EDMONTON. ALL RIGHTS RESERVED. Trademarks are owned or controlled by the Canadian Real Estate Association (CREA) and identify real estate professionals who are members of CREA (REALTOR®, REALTORS®) and/or the quality of services they provide (MLS®, Multiple Listing Service®)

Listing information last updated on May 12th, 2025 at 4:32am MDT