

## \$719,900 - 19 Edwin Crescent, St. Albert

MLS® #E4434061

**\$719,900**

5 Bedroom, 3.50 Bathroom, 2,657 sqft

Single Family on 0.00 Acres

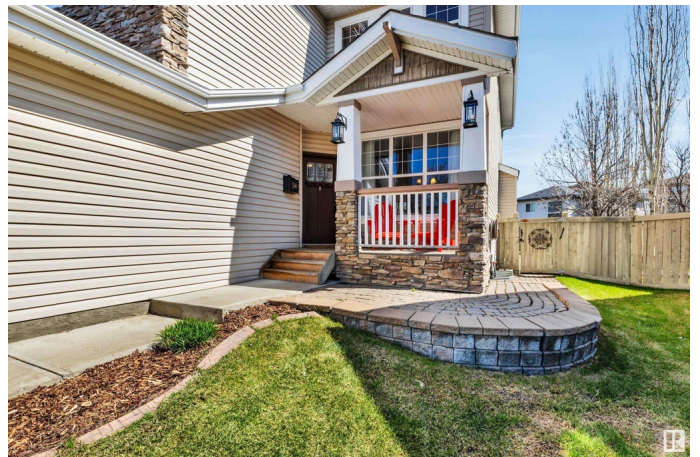
Erin Ridge, St. Albert, AB

Fantastic location for this 2656 sq. ft. 2 storey located on a large pie lot in a quiet Erin Ridge cul-de-sac! Great space for the growing family. The main floor features 9' ceilings, a huge maple kitchen with newer stainless steel appliances, large center island and corner pantry. A spacious dining nook with big windows let the sun pour in! A living room with gas fireplace, dining room and den with beautiful built-ins complete the main floor. There are 4 bedrooms upstairs including a massive primary with large windows, updated 5 piece ensuite with jetted tub and shower and walk-in closet. A bonus/family room provides great space for the family. The basement is finished with a 5th bedroom, 4 piece bath and large rec room plus storage space. Enjoy the large, east facing backyard this summer! Recent upgrades incl. shingles (2020), Furnace (2023), HWT (2025) and central A/C (2022).

Built in 2003

### Essential Information

MLS® #	E4434061
Price	\$719,900
Bedrooms	5
Bathrooms	3.50
Full Baths	3



Half Baths	1
Square Footage	2,657
Acres	0.00
Year Built	2003
Type	Single Family
Sub-Type	Detached Single Family
Style	2 Storey
Status	Active

### **Community Information**

Address	19 Edwin Crescent
Area	St. Albert
Subdivision	Erin Ridge
City	St. Albert
County	ALBERTA
Province	AB
Postal Code	T8N 7G9

### **Amenities**

Amenities	Air Conditioner, Deck, No Smoking Home, Patio, Vinyl Windows
Parking	Double Garage Attached

### **Interior**

Interior Features	ensuite bathroom
Appliances	Air Conditioning-Central, Alarm/Security System, Dryer, Microwave Hood Fan, Refrigerator, Storage Shed, Stove-Electric, Vacuum System Attachments, Vacuum Systems, Washer, Window Coverings, See Remarks
Heating	Forced Air-1, Natural Gas
Fireplace	Yes
Fireplaces	Mantel
Stories	3
Has Basement	Yes
Basement	Full, Finished

### **Exterior**

Exterior	Wood, Stone, Vinyl
Exterior Features	Cul-De-Sac, Fenced, Golf Nearby, Landscaped, No Back Lane, Playground Nearby, Public Transportation, Schools, Shopping Nearby

Roof	Asphalt Shingles
Construction	Wood, Stone, Vinyl
Foundation	Concrete Perimeter

**Additional Information**

Date Listed	May 2nd, 2025
Days on Market	7
Zoning	Zone 24

DATA IS DEEMED RELIABLE BUT IS NOT GUARANTEED ACCURATE BY THE REALTORS® ASSOCIATION OF EDMONTON. COPYRIGHT 2025 BY THE REALTORS® ASSOCIATION OF EDMONTON. ALL RIGHTS RESERVED.Trademarks are owned or controlled by the Canadian Real Estate Association (CREA) and identify real estate professionals who are members of CREA (REALTOR®, REALTORS®) and/or the quality of services they provide (MLS®, Multiple Listing Service®)

Listing information last updated on May 9th, 2025 at 5:17pm MDT