

## \$469,900 - 6036 Stanton Drive, Edmonton

MLS® #E4432693

**\$469,900**

3 Bedroom, 2.50 Bathroom, 1,450 sqft  
Single Family on 0.00 Acres

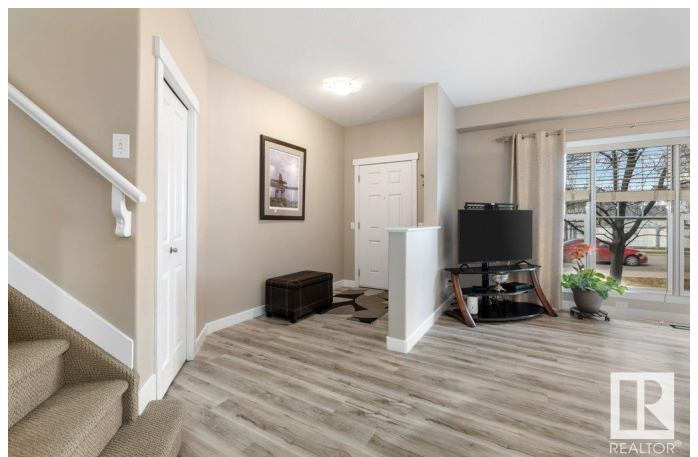
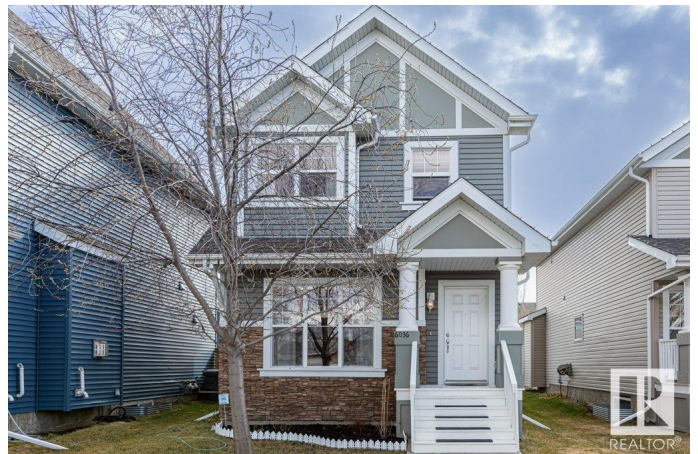
Summerside, Edmonton, AB

Welcome to Summerside! This is the one you've been waiting for! This former show home with lake access has been meticulously maintained by the original owner and offers 1,449 sq.ft of bright, functional living space. The main floor features newer vinyl plank flooring, fresh paint & new baseboards. The kitchen is flooded with natural light with Stainless steel appliances, ample cabinet space and is perfect for entertaining! Upstairs you'll find 3 spacious bedrooms, including a primary suite with double closets & a private 4 pc ensuite, plus a full 4 pc bath for the secondary rooms. Enjoy a sunny, south-facing yard with a large deck & gas line for BBQs on those long summer evenings. The basement has a great floor plan and awaits your personal touch. Stay cool all summer with central A/C! This property is completed with a detached double garage with alley access. Donâ€™t miss this amazing opportunity!

Built in 2009

### Essential Information

MLS® #	E4432693
Price	\$469,900
Bedrooms	3
Bathrooms	2.50
Full Baths	2



Half Baths	1
Square Footage	1,450
Acres	0.00
Year Built	2009
Type	Single Family
Sub-Type	Detached Single Family
Style	2 Storey
Status	Active

### Community Information

Address	6036 Stanton Drive
Area	Edmonton
Subdivision	Summerside
City	Edmonton
County	ALBERTA
Province	AB
Postal Code	T6X 0H1

### Amenities

Amenities	Air Conditioner
Parking	Double Garage Detached

### Interior

Interior Features	ensuite bathroom
Appliances	Air Conditioning-Central, Dishwasher-Built-In, Dryer, Garage Control, Garage Opener, Microwave Hood Fan, Refrigerator, Stove-Electric, Washer, Window Coverings
Heating	Forced Air-1, Natural Gas
Stories	2
Has Basement	Yes
Basement	Full, Unfinished

### Exterior

Exterior	Wood, Stone, Vinyl
Exterior Features	Airport Nearby, Back Lane, Fenced, Landscaped, Playground Nearby, Public Transportation, Schools, Shopping Nearby
Roof	Asphalt Shingles
Construction	Wood, Stone, Vinyl
Foundation	Concrete Perimeter

**School Information**

Elementary	Michael Strembitsky
Middle	Michael Strembitsky
High	J. Percy Page

**Additional Information**

Date Listed	April 25th, 2025
Days on Market	6
Zoning	Zone 53
HOA Fees	453.02
HOA Fees Freq.	Annually

DATA IS DEEMED RELIABLE BUT IS NOT GUARANTEED ACCURATE BY THE REALTORS® ASSOCIATION OF EDMONTON. COPYRIGHT 2025 BY THE REALTORS® ASSOCIATION OF EDMONTON. ALL RIGHTS RESERVED.Trademarks are owned or controlled by the Canadian Real Estate Association (CREA) and identify real estate professionals who are members of CREA (REALTOR®, REALTORS®) and/or the quality of services they provide (MLS®, Multiple Listing Service®)

Listing information last updated on May 1st, 2025 at 10:32am MDT