

\$236,500 - 223 524 Griesbach Parade, Edmonton

MLS® #E4432616

\$236,500

1 Bedroom, 1.00 Bathroom, 713 sqft

Condo / Townhouse on 0.00 Acres

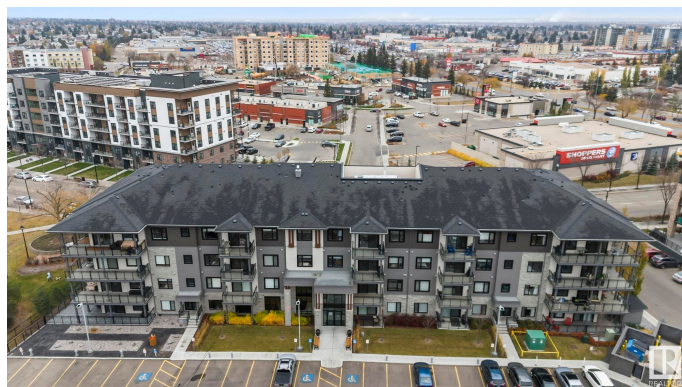
Griesbach, Edmonton, AB

Welcome to Veritas in Griesbach â€” where timeless design and unbeatable value meet in one of Edmontonâ€™s most prestigious communities. This 1-bedroom, 1-bathroom condo offers 713 SF of thoughtfully designed living space with 9-foot ceilings that create an open, airy feel beyond its footprint. Inside, youâ€™ll find quartz countertops, luxury vinyl plank flooring, stainless steel appliances, and in-suite laundry â€” a perfect blend of style and function. Enjoy access to premium building amenities including a fitness centre, social room, and guest suite for visiting friends and family. Located just steps from walking trails, lakes, and Griesbachâ€™s 24-acre park, with quick access to shops, restaurants, and transit, this home delivers peaceful living with urban convenience. Ideal for professionals, retirees, or savvy investors, this is one of the most affordable units in Veritas â€” and a rare chance to own in a building known for quality and community.

Built in 2018

Essential Information

MLS® #	E4432616
Price	\$236,500
Bedrooms	1
Bathrooms	1.00



Full Baths	1
Square Footage	713
Acres	0.00
Year Built	2018
Type	Condo / Townhouse
Sub-Type	Lowrise Apartment
Style	Multi Level Apartment
Status	Active

Community Information

Address	223 524 Griesbach Parade
Area	Edmonton
Subdivision	Griesbach
City	Edmonton
County	ALBERTA
Province	AB
Postal Code	T5E 6X2

Amenities

Amenities	Ceiling 9 ft., Closet Organizers, Exercise Room, No Animal Home, No Smoking Home, Parking-Visitor, Social Rooms
Parking	Parkade

Interior

Appliances	Dishwasher-Built-In, Dryer, Refrigerator, Stove-Countertop Electric, Washer, Window Coverings
Heating	Forced Air-1, Natural Gas
# of Stories	4
Stories	4
Has Basement	Yes
Basement	None, No Basement

Exterior

Exterior	Wood, Stone, Vinyl
Exterior Features	Flat Site, Landscaped, Playground Nearby, Public Transportation, Shopping Nearby
Roof	Asphalt Shingles
Construction	Wood, Stone, Vinyl
Foundation	Concrete Perimeter

Additional Information

Date Listed	April 24th, 2025
Days on Market	122
Zoning	Zone 27
Condo Fee	\$378

DATA IS DEEMED RELIABLE BUT IS NOT GUARANTEED ACCURATE BY THE REALTORS® ASSOCIATION OF EDMONTON. COPYRIGHT 2025 BY THE REALTORS® ASSOCIATION OF EDMONTON. ALL RIGHTS RESERVED.Trademarks are owned or controlled by the Canadian Real Estate Association (CREA) and identify real estate professionals who are members of CREA (REALTOR®, REALTORS®) and/or the quality of services they provide (MLS®, Multiple Listing Service®)

Listing information last updated on August 24th, 2025 at 5:17pm MDT