

\$222,500 - 309 10235 112 Street, Edmonton

MLS® #E4431755

\$222,500

2 Bedroom, 2.00 Bathroom, 791 sqft

Condo / Townhouse on 0.00 Acres

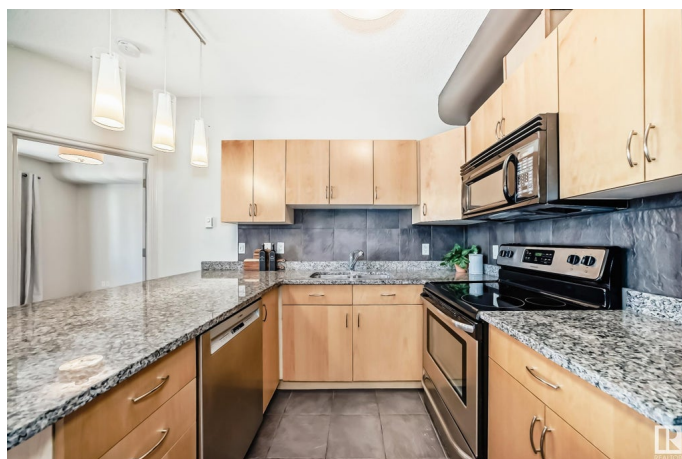
WÃ@hkwÃªntÃ´win, Edmonton, AB

Stylish and spacious, this 2 bedroom, 2 full 4-piece bathroom condo offers executive quality, modern living in a prime walkable location from the Ice District, Jasper Ave, LRT, and Grant MacEwan. The bright open-concept layout features 9-ft ceilings, designer lighting, and gray brushed hardwood floors that contrast beautifully with warm maple kitchen cabinets. Granite countertops, a ceramic top stove, and a large bar area make the kitchen ideal for cooking and entertaining. Each bedroom is generously sized with access to its own full bathroomâ€”perfect for professionals, students, or shared living. Set in a quiet, well-built building, this home offers the perfect balance of city life and peaceful comfort. Enjoy downtownâ€™s best cafÃ©s, restaurants, shops, and the 104 Street Marketâ€”all just a short walk away. Move-in readyâ€”downtown living at its best!

Built in 2007

Essential Information

MLS® #	E4431755
Price	\$222,500
Bedrooms	2
Bathrooms	2.00
Full Baths	2
Square Footage	791



Acres	0.00
Year Built	2007
Type	Condo / Townhouse
Sub-Type	Lowrise Apartment
Style	Single Level Apartment
Status	Active

Community Information

Address	309 10235 112 Street
Area	Edmonton
Subdivision	WÃ©hkwÃ©ntÃ©win
City	Edmonton
County	ALBERTA
Province	AB
Postal Code	T5K 1M7

Amenities

Amenities	Ceiling 9 ft., Closet Organizers, Parking-Visitor, Patio
Parking	Underground

Interior

Interior Features	ensuite bathroom
Appliances	Dishwasher-Built-In, Dryer, Microwave Hood Fan, Refrigerator, Stove-Electric, Washer, Window Coverings
Heating	In Floor Heat System, Natural Gas
Fireplace	Yes
Fireplaces	Mantel
# of Stories	6
Stories	1
Has Basement	Yes
Basement	None, No Basement

Exterior

Exterior	Concrete, Stucco
Exterior Features	Back Lane, Playground Nearby, Public Transportation, Schools, Shopping Nearby
Roof	Tar & Gravel
Construction	Concrete, Stucco
Foundation	Concrete Perimeter

Additional Information

Date Listed	April 18th, 2025
Days on Market	14
Zoning	Zone 12
Condo Fee	\$538

DATA IS DEEMED RELIABLE BUT IS NOT GUARANTEED ACCURATE BY THE REALTORS® ASSOCIATION OF EDMONTON. COPYRIGHT 2025 BY THE REALTORS® ASSOCIATION OF EDMONTON. ALL RIGHTS RESERVED.Trademarks are owned or controlled by the Canadian Real Estate Association (CREA) and identify real estate professionals who are members of CREA (REALTOR®, REALTORS®) and/or the quality of services they provide (MLS®, Multiple Listing Service®)

Listing information last updated on May 2nd, 2025 at 12:17pm MDT