

\$149,900 - 204 11445 Ellerslie Road, Edmonton

MLS® #E4429843

\$149,900

1 Bedroom, 1.00 Bathroom, 594 sqft

Condo / Townhouse on 0.00 Acres

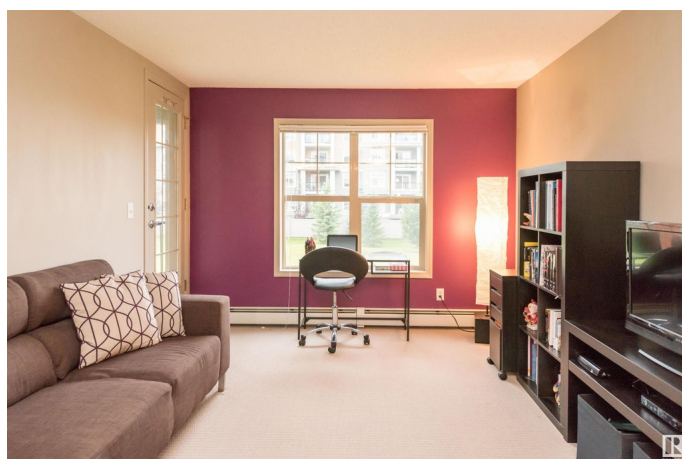
Rutherford (Edmonton), Edmonton, AB

This ideal one bedroom condo is located in RUTHERFORD VILLAGE. This unit exhibits an open area concept with a large living room and a gourmet style kitchen with a breakfast island. The spacious bedroom has access to the 4-piece bathroom with another entrance to the main unit. Enjoy the convenience of UNDERGROUND PARKING and STORAGE LOCKER as well as in-suite laundry. Enjoy the summers on the covered private BALCONY! This building is close to all amenities including shopping, restaurants, public transportation, LRT and Anthony Henday. The seller to provide \$1000 REBATE for refrigerator replacement"

Built in 2005

Essential Information

MLS® #	E4429843
Price	\$149,900
Bedrooms	1
Bathrooms	1.00
Full Baths	1
Square Footage	594
Acres	0.00
Year Built	2005
Type	Condo / Townhouse
Sub-Type	Lowrise Apartment



Style	Single Level Apartment
Status	Active

Community Information

Address	204 11445 Ellerslie Road
Area	Edmonton
Subdivision	Rutherford (Edmonton)
City	Edmonton
County	ALBERTA
Province	AB
Postal Code	T6W 1T1

Amenities

Amenities	Intercom, Parking-Visitor, Secured Parking, Security Door, See Remarks
Parking	Underground

Interior

Appliances	Dishwasher-Built-In, Dryer, Refrigerator, Stove-Electric, Washer
Heating	Hot Water, Natural Gas
# of Stories	4
Stories	1
Has Basement	Yes
Basement	None, No Basement

Exterior

Exterior	Wood, Brick, Stucco
Exterior Features	Airport Nearby, Golf Nearby, Playground Nearby, Public Transportation, Schools, Shopping Nearby, See Remarks
Roof	Asphalt Shingles
Construction	Wood, Brick, Stucco
Foundation	Concrete Perimeter

Additional Information

Date Listed	April 9th, 2025
Days on Market	69
Zoning	Zone 55
Condo Fee	\$523

DATA IS DEEMED RELIABLE BUT IS NOT GUARANTEED ACCURATE BY THE REALTORS® ASSOCIATION OF EDMONTON. COPYRIGHT 2025 BY THE REALTORS® ASSOCIATION OF EDMONTON. ALL RIGHTS RESERVED. Trademarks are owned or controlled by the Canadian Real Estate Association (CREA) and identify real

estate professionals who are members of CREA (REALTOR®®, REALTORS®®) and/or the quality of services they provide (MLS®®, Multiple Listing Service®®)

Listing information last updated on June 17th, 2025 at 4:17am MDT