

## \$380,000 - 17 Glenrose Crescent, Stony Plain

MLS® #E4427380

**\$380,000**

5 Bedroom, 2.00 Bathroom, 1,087 sqft

Single Family on 0.00 Acres

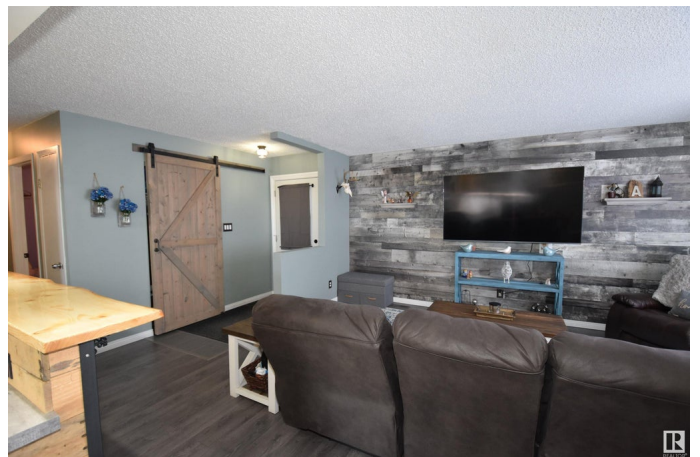
Glens The, Stony Plain, AB

Bungalow in The Glens on Huge Corner Lot with 5 Bedrooms and Oversized Heated Detached Double Garage. Inviting Natural Light is Plentiful throughout the Home. Main Floor Shows 3 Bedrooms, Updated 4PC Bath, Master w/Walk-in Closet and Built-in Shelving. New Flooring and Paint, Many New Light Fixtures, Custom Made Island in Kitchen and Barn Door on Large Coat Closet. Open Concept Kitchen, Living Room & Dining Area. You Will Find 2 More Great Sized Bedrooms w/Organizer Closets Downstairs. Also a Huge Rec Room, Laundry Room w/Sink & Storage, Another Storage Area w/Barn door & Large Updated 3 PC Bath. Basement Suite Potential with Sink Plumbing and 220 Volt for Kitchen Appliance. Cement Patio between House and Garage with Fencing. Double Garage and Wide Concrete Pad for Parking. Garage is heated, insulated with power vet. Concrete has been upgraded for hoist. Convenient Park across the Street and Schools within Walking Distance. Nice place to call Home!!!

Built in 1981

### Essential Information

MLS® #	E4427380
Price	\$380,000
Bedrooms	5



Bathrooms	2.00
Full Baths	2
Square Footage	1,087
Acres	0.00
Year Built	1981
Type	Single Family
Sub-Type	Detached Single Family
Style	Bungalow
Status	Active

### Community Information

Address	17 Glenrose Crescent
Area	Stony Plain
Subdivision	Glens The
City	Stony Plain
County	ALBERTA
Province	AB
Postal Code	T7Z 1A9

### Amenities

Amenities	Air Conditioner, Closet Organizers, Detectors Smoke, Exterior Walls-2"x6", No Animal Home, No Smoking Home, Patio, Vinyl Windows, Wall Unit-Built-In
Parking Spaces	4
Parking	220 Volt Wiring, Double Garage Detached, Heated, Insulated

### Interior

Appliances	Air Conditioning-Central, Dryer, Fan-Ceiling, Hood Fan, Refrigerator, Storage Shed, Stove-Electric, Washer
Heating	Forced Air-1, Natural Gas
Stories	2
Has Basement	Yes
Basement	Full, Finished

### Exterior

Exterior	Wood, Stucco
Exterior Features	Corner Lot, Fenced, Landscaped, Playground Nearby, Schools, Shopping Nearby
Roof	Asphalt Shingles

Construction	Wood, Stucco
Foundation	Concrete Perimeter

**Additional Information**

Date Listed	March 25th, 2025
Days on Market	38
Zoning	Zone 91

DATA IS DEEMED RELIABLE BUT IS NOT GUARANTEED ACCURATE BY THE REALTORS® ASSOCIATION OF EDMONTON. COPYRIGHT 2025 BY THE REALTORS® ASSOCIATION OF EDMONTON. ALL RIGHTS RESERVED.Trademarks are owned or controlled by the Canadian Real Estate Association (CREA) and identify real estate professionals who are members of CREA (REALTOR®, REALTORS®) and/or the quality of services they provide (MLS®, Multiple Listing Service®)

Listing information last updated on May 2nd, 2025 at 10:02am MDT