

\$279,900 - 1307 10388 105 Street, Edmonton

MLS® #E4426234

\$279,900

2 Bedroom, 2.00 Bathroom, 781 sqft

Condo / Townhouse on 0.00 Acres

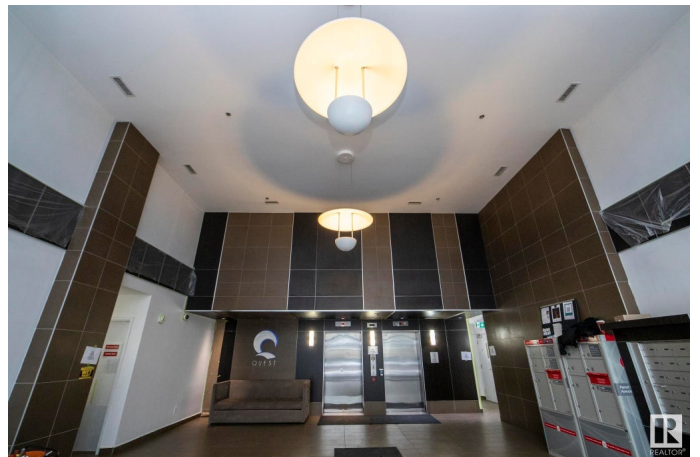
Downtown (Edmonton), Edmonton, AB

Welcome to the highly desired Quest building. This 13th floor 2 bed, 2 bath CORNER UNIT with heated underground parking has an unbeatable location directly across the street from Macewan University and Rogers Place and Ice District, offering you world class dining and shopping and amenities at your fingertips. This impeccable 13th floor corner unit has a great ultra modern stye and affords breathtaking views of our city. This unit is fully loaded with BRAND NEW VINYL PLANK flooring and high end steel appliances and granite countertops throughout. Welcome home to the Quest and be a part yeg's vibrant downtown and be in the heart of it all.

Built in 2009

Essential Information

MLS® #	E4426234
Price	\$279,900
Bedrooms	2
Bathrooms	2.00
Full Baths	2
Square Footage	781
Acres	0.00
Year Built	2009
Type	Condo / Townhouse
Sub-Type	Apartment High Rise



Style	Single Level Apartment
Status	Active

Community Information

Address	1307 10388 105 Street
Area	Edmonton
Subdivision	Downtown (Edmonton)
City	Edmonton
County	ALBERTA
Province	AB
Postal Code	T5J 0C2

Amenities

Amenities	Air Conditioner, Deck, No Animal Home, No Smoking Home, Parking-Visitor, Storage-In-Suite
Parking	Heated, Underground

Interior

Interior Features	ensuite bathroom
Appliances	Air Conditioning-Central, Dishwasher-Built-In, Hood Fan, Oven-Built-In, Oven-Microwave, Refrigerator, Stacked Washer/Dryer, Stove-Countertop Electric
Heating	Baseboard, Natural Gas
# of Stories	23
Stories	1
Has Basement	Yes
Basement	None, No Basement

Exterior

Exterior	Concrete, Brick
Exterior Features	Corner Lot, Low Maintenance Landscape, Playground Nearby, Public Swimming Pool, Public Transportation, Schools, Shopping Nearby, View City, View Downtown
Roof	EPDM Membrane
Construction	Concrete, Brick
Foundation	Concrete Perimeter

Additional Information

Date Listed	March 18th, 2025
Days on Market	46

Zoning	Zone 12
Condo Fee	\$610

DATA IS DEEMED RELIABLE BUT IS NOT GUARANTEED ACCURATE BY THE REALTORS® ASSOCIATION OF EDMONTON. COPYRIGHT 2025 BY THE REALTORS® ASSOCIATION OF EDMONTON. ALL RIGHTS RESERVED. Trademarks are owned or controlled by the Canadian Real Estate Association (CREA) and identify real estate professionals who are members of CREA (REALTOR®, REALTORS®) and/or the quality of services they provide (MLS®, Multiple Listing Service®)

Listing information last updated on May 3rd, 2025 at 11:17am MDT