

\$895,555 - 6728 Crawford Way, Edmonton

MLS® #E4421295

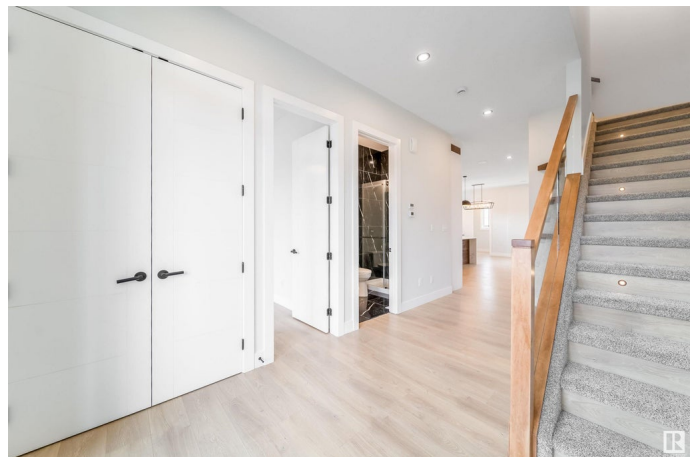
\$895,555

9 Bedroom, 5.00 Bathroom, 2,279 sqft

Single Family on 0.00 Acres

Chappelle Area, Edmonton, AB

****3 Kitchens, 3 Furnaces, 3 suites, UNDER 900K**** Experience luxury living & unmatched investment potential with this custom-built SW Edmonton gem! Designed for families or investors, this property features 3 income-generating suites, 9 spacious bedrooms, & 5 modern bathrooms. The main floor impresses with 10ft ceilings, a chef's kitchen showcasing a waterfall island, s/steel appliances, & a dining area with a buffet bar, + a main floor bedroom & full bath. Upstairs, the primary suite is a serene retreat w/12ft ceiling, large windows, & a spa-like ensuite, alongside 3 additional bedrooms & convenient laundry. The 2-bed legal basement suite offers over 900 sq ft of bright living space, while the 2-bed garage suite above the double garage adds even more rental potential. Perfectly situated near walking trails, parks, schools, & only 15 minutes to Edmonton International Airport, this meticulously designed property combines luxury, functionality, and income potential in one exceptional package!



Built in 2024

Essential Information

| | |
|----------|-----------|
| MLS® # | E4421295 |
| Price | \$895,555 |
| Bedrooms | 9 |

| | |
|----------------|------------------------|
| Bathrooms | 5.00 |
| Full Baths | 5 |
| Square Footage | 2,279 |
| Acres | 0.00 |
| Year Built | 2024 |
| Type | Single Family |
| Sub-Type | Detached Single Family |
| Style | 2 Storey |
| Status | Active |

Community Information

| | |
|-------------|-------------------|
| Address | 6728 Crawford Way |
| Area | Edmonton |
| Subdivision | Chappelle Area |
| City | Edmonton |
| County | ALBERTA |
| Province | AB |
| Postal Code | T9G 0B7 |

Amenities

| | |
|-----------|--|
| Amenities | Ceiling 10 ft., Ceiling 9 ft., Detectors Smoke, No Animal Home, No Smoking Home, Parking-Extra, 9 ft. Basement Ceiling |
| Parking | Double Garage Detached, Over Sized |

Interior

| | |
|-------------------|---|
| Interior Features | ensuite bathroom |
| Appliances | Dishwasher-Built-In, Dryer, Hood Fan, Oven-Built-In, Refrigerator, Stove-Countertop Gas, Washer |
| Heating | Forced Air-1, Natural Gas |
| Fireplace | Yes |
| Fireplaces | Wall Mount |
| Stories | 3 |
| Has Suite | Yes |
| Has Basement | Yes |
| Basement | Full, Finished |

Exterior

| | |
|-------------------|--|
| Exterior | Wood, Stone, Vinyl |
| Exterior Features | Back Lane, Public Transportation, Schools, Shopping Nearby |

| | |
|--------------|--------------------|
| Roof | Asphalt Shingles |
| Construction | Wood, Stone, Vinyl |
| Foundation | Concrete Perimeter |

Additional Information

| | |
|----------------|---------------------|
| Date Listed | February 12th, 2025 |
| Days on Market | 78 |
| Zoning | Zone 55 |

DATA IS DEEMED RELIABLE BUT IS NOT GUARANTEED ACCURATE BY THE REALTORS® ASSOCIATION OF EDMONTON. COPYRIGHT 2025 BY THE REALTORS® ASSOCIATION OF EDMONTON. ALL RIGHTS RESERVED.Trademarks are owned or controlled by the Canadian Real Estate Association (CREA) and identify real estate professionals who are members of CREA (REALTOR®, REALTORS®) and/or the quality of services they provide (MLS®, Multiple Listing Service®)

Listing information last updated on May 1st, 2025 at 3:47am MDT