

# \$2,716,260 - 6515 17 Street, Edmonton

MLS® #E4394871

**\$2,716,260**

0 Bedroom, 0.00 Bathroom,  
Single Family on 0.00 Acres

Edmonton South East, Edmonton, AB

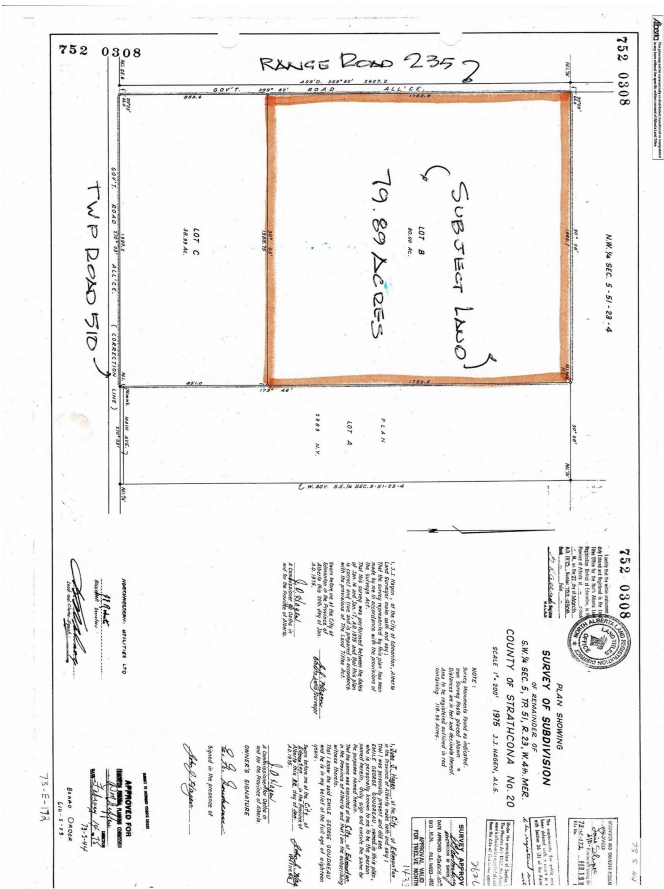
Future development opportunity. 79.89 acre rectangular parcel of land located just east of Beaumont on TWP RD 510 and quarter mile north on Range Road 235. Recently annexed into the City of Edmonton, currently zoned AES (Agriculture Edmonton South). Just a couple miles to the town of Beaumont, Colonial and Eagle Rock Golf Courses, short drive to Sherwood Park, South Edmonton Common and the International Airport.

## Essential Information

|           |                 |
|-----------|-----------------|
| MLS® #    | E4394871        |
| Price     | \$2,716,260     |
| Bathrooms | 0.00            |
| Acres     | 0.00            |
| Type      | Single Family   |
| Sub-Type  | Vacant Lot/Land |
| Status    | Active          |

## Community Information

|             |                     |
|-------------|---------------------|
| Address     | 6515 17 Street      |
| Area        | Edmonton            |
| Subdivision | Edmonton South East |
| City        | Edmonton            |
| County      | ALBERTA             |
| Province    | AB                  |
| Postal Code | T6X 1A8             |



**Exterior**

Exterior Features    Airport Nearby, Private Setting, Shopping Nearby

**Additional Information**

Date Listed                June 27th, 2024  
Days on Market        308  
Zoning                    Zone 33

DATA IS DEEMED RELIABLE BUT IS NOT GUARANTEED ACCURATE BY THE REALTORS® ASSOCIATION OF EDMONTON. COPYRIGHT 2025 BY THE REALTORS® ASSOCIATION OF EDMONTON. ALL RIGHTS RESERVED.Trademarks are owned or controlled by the Canadian Real Estate Association (CREA) and identify real estate professionals who are members of CREA (REALTOR®, REALTORS®) and/or the quality of services they provide (MLS®, Multiple Listing Service®)  
Listing information last updated on May 1st, 2025 at 12:17pm MDT